

Picture 148: Pocket with sliding lit on the outside of a *tantō-koshirae*.

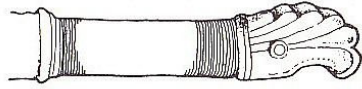


Picture 149: *ichibu-gin*

### 8.10 *torikubi no tachi* (鳥頸太刀)

The *torikubi no tachi* (lit. „bird-neck *tachi*“) is a ceremonial *tachi* mounting which as its origin in the Kofun-period *keikantō no tachi* (鶏冠頭太刀, lit. „cockscumb-pommel *tachi*“). There exist namely highly ornamental swords from the Early History whose pommels are interpreted in the form of more or less stylized cockscombs (*keikan*, 鶏冠, see picture 150). However, it is unknown on what occasions these ceremonial *tachi* were used during the Nara, Heian, Kamakura and Nanbokuchō period because the earliest extant pieces from the time after the Early History date to the Muromachi period. Some assume that they were worn at the courtly falconry, others associate them with courtly falconers themselves.

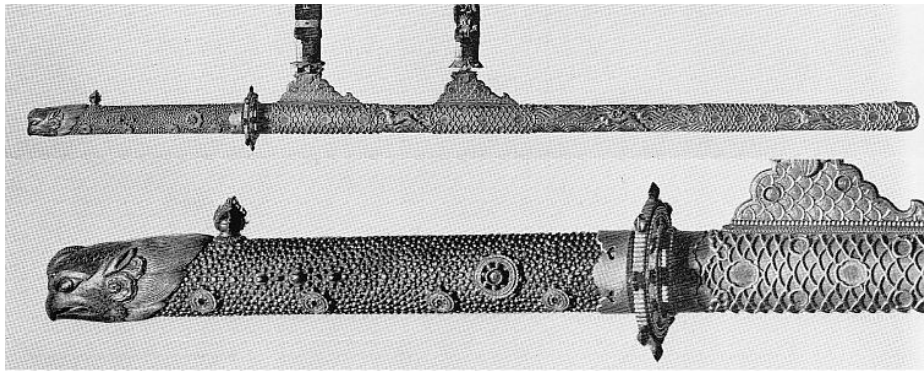
But we know portraits of Muromachi-period warriors like Asano Nagamasa (浅野長政, 1547-1611, see picture 151) who is depicted wearing a *torikubi no tachi*. That means we can assume, that this sword form became again popular amongst high-ranking *bushi* from the Momoyama to the Edo period. As there were many offered to temples, also a religious context of *torikubi no tachi* mountings is possible.



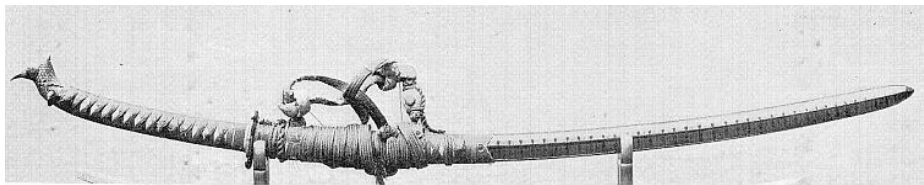
Picture 150: Pommel of a *keikantō no tachi* from the Kofun period.



Picture 151: Portrait of Asano Nagamasa with a *torikubi no tachi* →



Picture 152: *torikubi no tachi* from the early Muromachi period.  
Kumanohayatama-taisha (熊野速玉大社, Wakayama Prefecture)



Picture 153: *torikubi no tachi* from the late Muromachi period. Please note the interpretation of the scabbard and pommel in the form of a pheasant.