



78 Tsuba

from the Collection of
Grev Cooke

Introduction

For sale are 78 Tsuba from my private collection. I can be contacted via PM here on NMB (Kissakai) or alternatively Emailed at Grev.Cooke@ntlworld.com

All prices are excluding P&P and any associated fees, the prices in USD will be approximately 1.5* listed GBP prices including conversion fees.
Hi-res Images available on request.

Contents

Akao:	3
Akasaka	4
Arikawa.....	5
Bizen	6
Bushu.....	7
Choshu.....	11
Heianjo	14
Higo	18
Iga:	19
Kaga	20

Kanagushi	21
Kanayama	22
Kinai	23
Kyoto	27
Mito	28
Nakazano Family.....	30
Namban	31
Nara	35
Owari	38
Plate makers.....	42
Sado Island	44
Satsuma	45
Sendai	46
Shoami (Various)	48
Soten	60
Tembo	61
Tetsugendo.....	65
Tosho	66
Umetada.....	67
Unknown	72

T201 - Dragon

**School:**

Akao

Signature

Kofu ju Akao Yoshitsugu
(3rd generation) H12228
Unusual to have this longer mei

Period

1725

Style

Sukashi

Subject

Powerfully cut Kage sukashi rain
dragon

Material

Iron

Size

77 x 73 x 4.4mm

Price

£180



T92 - Chidori and Waves



School:
Akasaka

Signature
None

Period
1750

Style
Sukashi

Subject
Chidori and waves with
ribbed rim (mimi)

Material
Iron

Size
73 x 70 x 5.0

Price
£160



T204 - Octopus



School:

Arikawa
H07967

Signature

None

Period

1700

Style

High relief

Subject

Iron tsuba tanzakumei (inset plaques) edo
The design features a copper octopus signed Kazumasa. A dragon signed Masahisa. Copper mushrooms signed Masatsugu and a Ken also signed Masahisa.

With the phallic mushrooms, Octopus, Dragon and Ken the tsuba's theme seems to be one of invoking sexual power. Whatever the design represents it has a very "samurai" feel to it.
The octopus is terrific

Size

8.2 x 7.6 x 0.5cm

Material

Iron, copper
and shakudo

Size

82 x 76 x 5mm

Price

£235



T26 - River and Mountains



School:

Bizen

Signature

None

Period

1775

Style

Hot stamped

Subject

River and Mountains

Material

Iron

Size

66 x 70 x 5mm

Price

£65



T17 - Aoi Leaf



School:
Bushu

Signature
None

Period
1800

Style
Sukashi

Subject
Hollyhock (Aoi Leaf)
The Aoi leaf is the Tokugawa mon

Material
Iron

Size
68 x 67 x 5mm

Price
£295



T79 - Japanese Knotweed

**School:**

Bushū

Signature

Bushu ju Masakata

H 04075.0

Ref: W V1 p303 upper RH.

S p187 upper row

Period

1775

Style

Sukashi

Subject

Japanese knotweed (Itadori)

Material

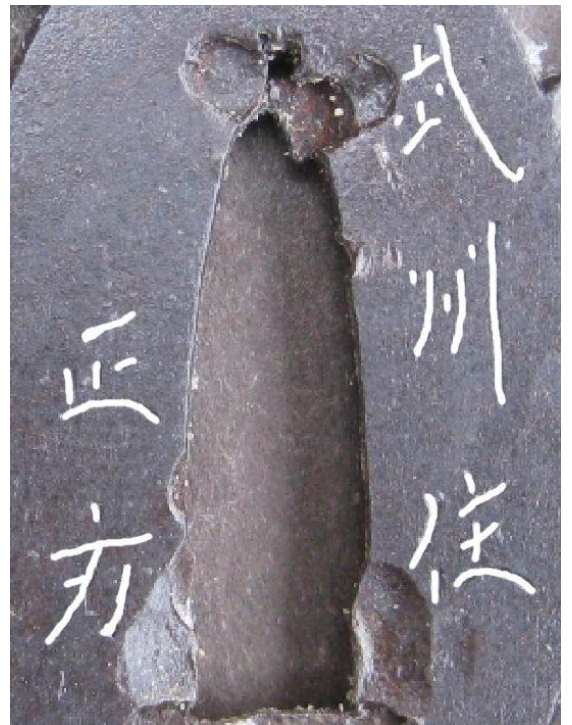
Iron and brass inlay

Size

71 x 66 x 4mm

**Price**

£210



T206 - Birds



School:

Bushu

Signature

Buko ju Nagayoshi

武江住 Buko ju

長 Naga 好 aki

Buko = Bushu Edo

Period

1700

Style

Sukashi

Subject

Three cranes in the round

Material

Iron

Size

70 x 69 x 5.3mm



Price

£250

Note

This was sold at Bonhams in 2015.

Described as 16-17th century and composed of three cranes in flight.

It was stated to be by Nagaaki but I believe it to be Nagayoshi

The smoothness of the cranes makes this a very tactile tsuba with a nice patina

T117 - Leaves



School:

Bushū

Signature

Masakata. H04075

Ref: W V1 p303 upper and lower RH

Period

1750

Style

Sukashi

Subject

Leaves

Material

Iron and brass with a shakudo ring;

Size

72 x 68 x 5.4mm

Price

£180



T74 - Chrysanthemum



School:

Chōshū Hagi
With HTKK papers

Signature

None

Period

Mid Edo 1750
Cert dated 14th November 2012

Style

Sukashi

Subject

Chrysanthemum and Leaves

Material

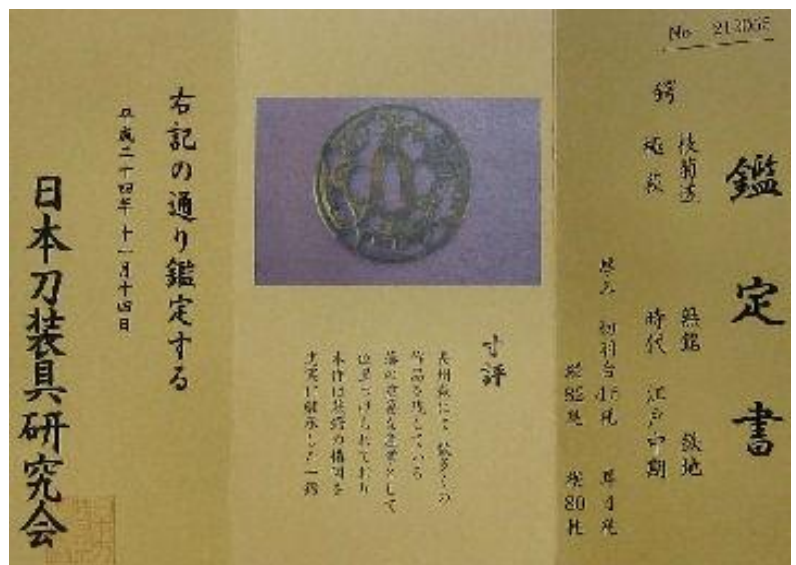
Iron

Size

81 x 81 x 5mm

Price

£320



T25 - Flowers in a river

**School:**

Chōshū

Signature

None

Period

1700

Style

Sukashi

Subject

Cherry floating in a river

Design is known as Yoshino-gawa.

It represents the circle of life.

The Yoshino river used by the Hazama school. The Yoshino river which rises in Tosa province, passes through Awa province and enters the Pacific Ocean at Tokushima.

Material

Iron

Size

78 x 74 x 4.5mm

Price

£200



T197 - The Four seasons



School:
Choshu

Signature
None

Period
1850

Subject
The four seasons

Material
Iron and brass

Size
75 x 72 x 4.5mm

Price
£160

Note
The four seasons in segmented areas
An unusual form



T23 - Hawk feathers



School:
Heianyo

Signature
None

Period
1800

Style
Sukashi

Subject
Hawk feathers (takanoha)
with karakusa tendrils

Material
Iron and brass wire

Size
77 x 77 x 4mm

Price
£220



T66 - Heianjo Daisho



School:
Heianjo

Signature
None

Period
1750

Style
Sukashi

Subject
Leaves

Material
Iron and Brass inlay in very good condition

Size
Dai = 85 x 84 x 5mm
Sho = 82 x 82 x 5mm
Not a great size difference but the
nakagoana size:
Dai = 28.7 x 8.9mm
Sho = 26.6 x 7.7mm

It is debatable if this is a true Daisho but
there is a slight difference with the
nakagoana sizes
Mr Hallam said these were made at the
same time and it is very unusual for these
to come together again after over 250
years and should be kept together

Images are one side of each tsuba

Price
£340



T70 - Bell Flower



School:

Heianjo

Signature

None

Period

1500

Style

Inlay

Subject

Chinese bell flower

Material

Iron and brass inlay

Size

74 x 74 x 4.5mm

Price

£120



Note:

These images were taken in natural light and no flash. Just shows the colour difference. The actual colour is probably mid-way between the two images

T134 - Karakusa



School:
Heianjo

Signature
None

Period
1850

Style
Inlayed

Subject
Tendrils (karakusa)

Material
Iron with brass
Normally inlay would be copper so
this is a rare variation

Size
72 x 72 x 4.3 mm

Price
£115



T39 - Castle and Pier



School:

Higo

Signature

None

Period

1850

Style

Inlay (Kaga zogan)
Very fine detail

Subject

A castle and pier

Material

Iron and gold/silver inlay

Size

70 x 66 x 5.5 inner and outer
Inside the rim (mimi) 5mm



Price

£150

T43 - Sunlight on water



School:
Iga

Signature
None

Period
1800

Style

Subject
Sunlight reflected on water

Material
Iron

Size
70 x 70 x 5mm

Price
£75



T170 - Geometric



School:

Kaga

Signature

None

Period

1600

Style

Inlaid

Subject

Classic Kaga work depicting a design used on Japanese stirrups

Material

Iron with brass inlay

Size

73 x 67 x 4.3mm

Price

£190

Note

Inlay in almost perfect condition, or a tsuba that is over 400 years old it shows the skill of the maker. A design with great style



T139 - Flower Punched

**School:**

Kanagushi (Tachi)

Signature

No

Period

1575

Style

Punched flowers

Subject

Flowers

Material

Brass (Shinchu)

Size

62 x 61 x 4.8mm

Price

£235

**Note:**

The 'San Diego' was a Portuguese ship that sank off the Philippines in 1601," amongst its cargo were soft metal tsuba dating to the late Momoyama period. This tsuba is similar to those found on this shipwreck. Also call 'San Diego kanaguchi tsuba'. Kanaguchi are professional tsuba makers

T152 - Hanabishi



School:
Kanayama

Signature
None

Period
1625

Style
Sukashi

Subject
Hanabishi (flowery diamond) and chidori (birds)

Material
Iron

Size
74 x 68 x 5.5mm

Price
£265



T48 - Aoi Leaf

**School:**

Kinai of Echizan
7th generation
H03170

Signature

Echizen ju Kinai saku

Period

1800

Style

Sukashi

Subject

Holly hock (Aoi)

Material

Iron

Size

69 x 66 x 5mm

Price

£190



T49 - Acorn Leaves



School:

Kinai of Echizan (BH)
H03170

Signature

Echizen ju Kinai saku
5th generation

Period

Rokudai Takahashi period
1800

Style

Chisel with inlay work. The leaves are very thin and delicate

Subject

Oak leaves (Kashiwa) and acorns (kashi no mi) with tendrils (zogan)

Material

Iron and gold inlay

Size

68 x 64 x 4mm

Price

£225



T65 - Leaves



School:

Kinai of Echizen
H03170

Signature

Echizen ju Kinai saku
6th generation

Period

1825

Style

Sukashi

Subject

Three aoi leaves with stalk design forming the rim (mimi) and tendrils on the leaves. Kogai ana in the form of an eaten leaf

Material

Iron and fine gold inlay (zogan)

Size

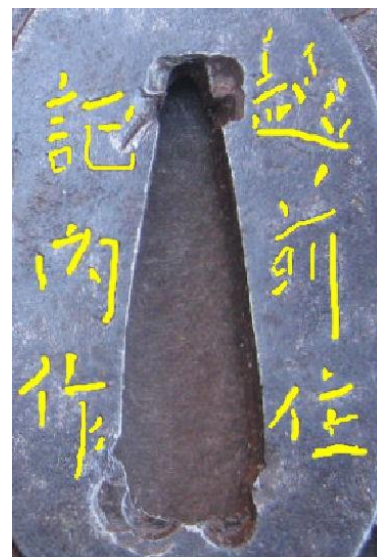
70 x 67 x 5mm

Price

£160

Ki	Echi
Nai	zen
Saku	ju

Kinai made this while living in Echizen



T185 - Aoi



School:

Kinai (Echizen)

Signature

Kinai of Echizen 6th generation

Period

1800

Style

Sukashi

Subject

Hollyhock (Aoi Leaf)

The Aoi leaf is the Tokugawa mon

Material

Iron with gold inlay. Using more gold inlay than usual tsuba of this design

Size

59 x 56 x 4.4mm

Price

£160



T68 - Motifs



School:

Kyoyo

Very similar in design to Yasuchika school around 1750.

None of their tsuba are signed

They both have a silver rims with hitsuana plugs

Signature

None

Period

1850

Subject

Motifs. Face, flowers and waterfall framed in fans. Butterflies

Material

Iron with silver and gold inlays. The hitsuana are crossed hatched

Size

83 x 77 x 5mm

Price

£295



T67 - Shishi dancer



School:

Mito

Signature

None

Period

1800

Subject

Shishi dancer

Material

Iron with gold highlights

Size

76 x 72 x 4mm

Price

£420



T75 - Cloud Dragon



School:
Mito

Signature
None

Period
1825

Subject
Cloud dragon

Shape
Pillow (go-shi-gata)

Material
Iron and Copper

Size
69 x 61 x 4mm (recessed rim (mimi))

Price
£140

Unusual shape and the design needs more research



T80 - Plain

**School:**

Family name
Nakazono

Signature

Kunihiro H03536

Period

1850

Style

GO stone (goishi gata)

Material

Iron

Size

68 x 67 x 6 to 5mm

Price

£85



T109 - Namban dragons



School:
Namban

Signature
None

Period
1575

Style
Dragons. An early Namban example

Subject
Dragons

Material
Iron and gold
Nice shakudo inserts on the hitsuana

Size
70 x 66 x 4mm

Price
£125



T90 - Namban - Dragon



School:
Namban

Signature
None

Period
1750

Subject
Dragon chasing jewel with arabesques

Material
Iron

Size
64 x 52 x 4.3mm

Price
£105



T187 - Aoi



School:
Namban – Kyoto

Signature
None

Period
1800

Subject
Flowers, tendrils and Buddhist symbols

Material
Iron

Size
78 x 73 x 5.1mm

Price
£235



T155 - Dragon



School:
Namban Kanton

Signature
None

Period
1750

Style
Engraved in kamakuri bori style
Unusual carving

Subject
Dragon in water

Material
Iron

Size
68 x 63 x 4.4mm

Price
£130



T31 - Ox and tree



School:
Nara

Signature
None

Period
1830

Subject
Bull and Tree

Material
Copper

Size
64.5 x 58.5 x 4mm

Price
£160



T88 - Dogs



School:

Nara

Signature

None

Period

1800

Style

Inlay and high relief

Subject

Dogs and millet

Material

Iron and inlaid gold

Size

75 x 71 x 4mm

Price

£160



T57 - Moon over a River



School:
Nara

Signature
None

Period
1750

Style
Carved

Subject
Moon over a river
Opposite side is a river bank

Material
Iron with gold and silver

Size
68 x 65 x 4mm

Price
£85



T62 - Horse Bit



School:

Owari

Signature

None

Period

1750

Style

Sukashi

Subject

Horse bit

Material

Iron

Size

69 x 69 x 5mm

Price

£110



T166 - Birds



School:

Owari

Signature

None

Period

1750

Style

Sukashi

Subject

Birds (chidori) and snow flakes

Material

Iron

Size

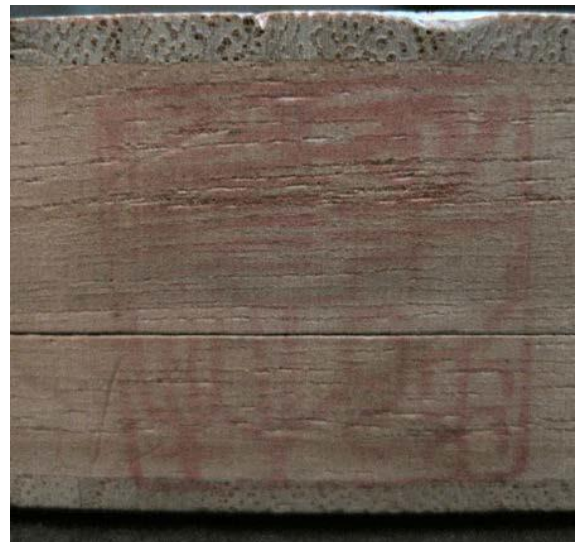
64 x 60 x 4.3mm

Price

£120

Notes:

From a private collection over 60 years old. Originally bought from a Japanese seller



T176 - Tansu



School:

Owari

Signature

None

Period

1650

Style

Sukashi

Subject

Chest handles (tansu) and waves
An usual design

Material

Iron

Size

80 x 67 x 6.2mm

Price

£550



T200 - Matsukawa

**School:**

Owari

Signature

None

Period

1750

Style

Sukashi

Subject

The hishi diamond shape itself came very early on, and the name actually means water chestnut or caltrop (shown in the image below). The 'Matsukawa' pine bark version of the hishi/bishi pattern seems to have appeared much later.

Material

Iron with tekkotsu around the rim

Size

71 x 68 x 4.1mm

Price

£130



T58 - Plain



School:
Plate maker

Signature
Kiyoshige

Period
1725

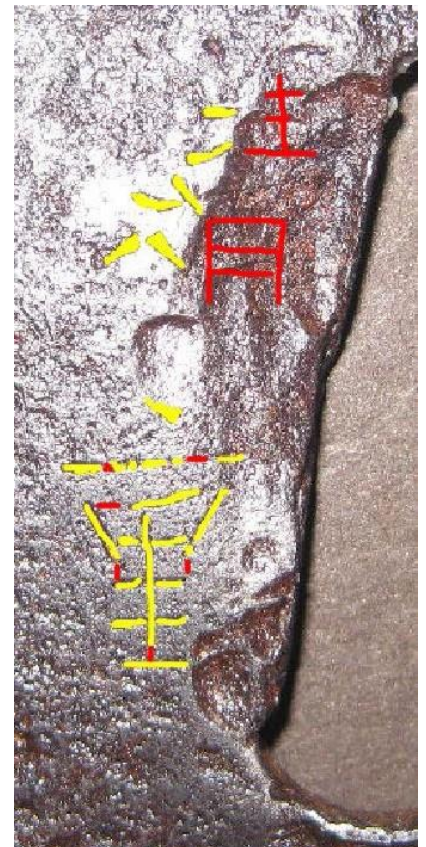
Style
Plain

Subject
None

Material
Iron

Size
73 x 70 x 3.5mm

Price
£55



T81 - Sunlight on water



School:
Plate maker

Signature
None

Period
1750

Style
Chiselled

Subject
Sunlight on water. Unusual to be square shaped as they are normally round

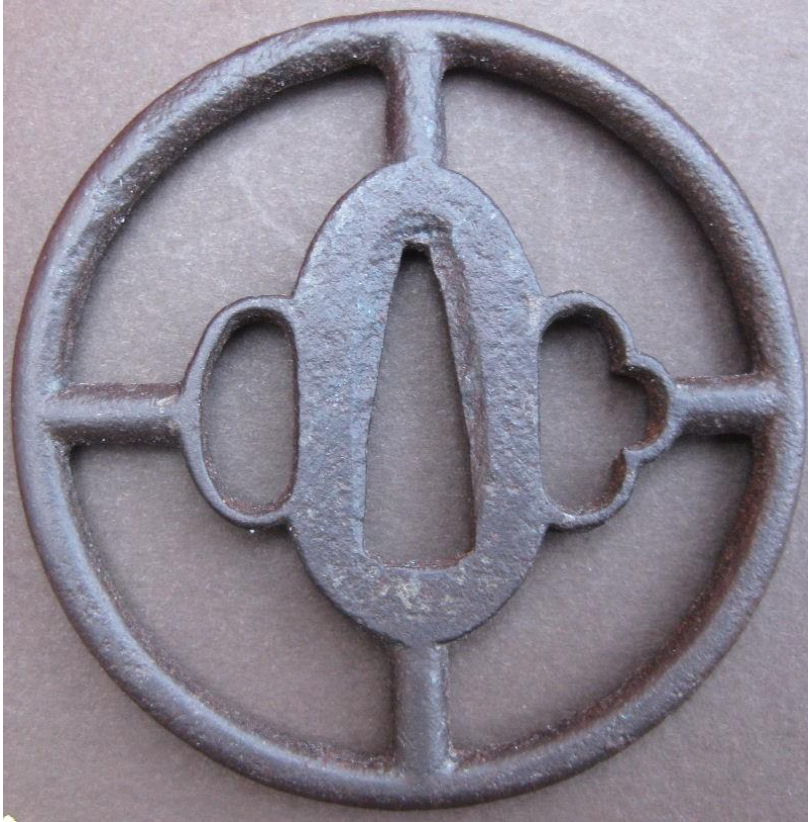
Material
Iron

Size
66 x 65 x 6mm

Price
£65



T77 - Horse bit



School:
Sado Island

Signature
None

Period
1590

Style
Sukashi (fine Tekkotsu showing on mimi)

Subject
Horse bit

Material
Iron. Fine Tekkotsu (bones) showing on the rim (mimi).

Size
77 x 77 x 6.0mm

Price
£125



T53 - Gourd and leaves



School:
Satsuma

Signature
None

Period
1600

Style
Forged

Subject
Gourd plant

Size
61 x 59 x 4mm

Price
£75



T102 - Ribbed



School:

Sendai

Signature

None

Period

1700

Style

Carved parallel lines

Subject

Unknown

Material

Iron with some silver inlay

Size

68 x 66 x 5mm

Price

£95

Note

Unusual to have the single stripe which lifts the design so effectively



T107 - Cherry blossoms



School:
Sendai

Signature
None

Period
1700

Subject
Cherry blossom on a river

Material
Iron and silver inlay

Size
70 x 64 x 4.5mm

Price
£210

Note
Simple effective design. The reverse with the falling petals is a nice addition



T142 - Landscape



School:

Aizu Shoami

Signature

Kanenori H02518

This is a powerfully cut mei

Ref: W V3 p20. S p118 lower LH

Period

1780

Style

Carved

Subject

Waterfall and mountains

Material

Iron and traces of gold inlay

Size

66 x 63 x 5.2mm

Price

£180



T157 - Tea berry



School:
Aizu Shoami

Signature
None

Period
1750

Style
Hot stamped tea berry plant
(Chanomi bloom)

Subject
Crossed lines referred to as kakine

Material
Iron and brass inlay.
Iron of very good quality

Size
73 x 69 x 4.5mm

Price
£120



T184 - Clouds



School:
Aizu Shoami

Signature
Shigenobu. H08418

Period
1700

Style
Sukashi

Subject
Clouds

Material
Iron

Size
71 x 71 x 4.8mm

Price
£110

Note
A design who's significance possibly only known by the maker



T11 - Camellia



School:
Shōami

Signature
Shōami

Period
1850

Style
Deep carving

Subject
Camellia

Material
Iron

Size
68 x 67 x 5mm

Price
£100



T15 - Sun rays

**School:**

Shōami in the
Style of Sautome
Image shown in
Jim Gilberts
'Japanese
tsuba plates' (BH)

Signature

None

Period

1775

Style

Radiating lines
(Amida Yasuri) like flower petals

Subject

Amida Buddha's sun rays

Material

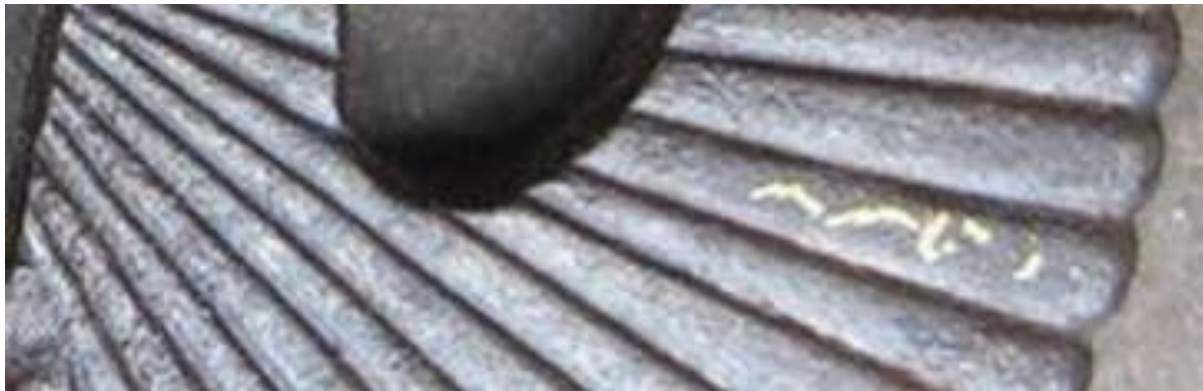
Iron and gold inlay.
Some inlay missing

Size

68 x 68 x 5.5mm

Price

£95



T41 - Landscape and Birds



School:

Shōami H02511

Signature

Shoami RH

Kanenobu LH

Worked in Aizu,
Iwashiro province

Period

1775

Style

Chiselled

Subject

Water and clouds

Material

Iron + silver and gold inlay

Size

70 x 67 x 4.75mm



Price

£140

T45 - Satsuma mon

**School:**

Shōami – Edo

Signature

None

Period

1800

Subject

Horses bridle

Material

Iron with lacquer

Size

66 x 63 x 4.5mm

Price

£120

T177 - Moon and Stars



School:
Kyo Shoami

Signature
None

Period
1650

Style
Sukashi

Subject
Moon and stars a classic design

Material
Iron

Size
71 x 71 x 6.0mm

Price
£685



T64 - Plum Flower and Wood Grain



School:

Shōami from the Sendai area

Signature

None

Period

1825

Style

Carved

Subject

Plum flower and Grain

Material

Iron and brass inlay

Size

74 x 61 x 6mm

Price

£200



Detail showing how the design curves around the Edge (mimi)



T173 - Tree rings



School:

Shoami

Signature

None

In the style of Sadahiro

Period

1800

Style

Although the tsuba condition appears to be rather poor, in fact the bulk of the various nicks and gouges are placed there deliberately. The motif featured is that of nenrin, or the rings of a tree, punctuated by the holes and tracks left by worms. This motif is seen occasionally in the late-Momoyama and early Edo periods, and this is one particularly associated with Sadahiro of Owari. The theme is one expressing the impermanence of things, the scars of life, the marks of experience. This effect is enhanced by remnant gold inlay along the dote-mimi which may have been deliberately abraded away, a technique known as kin-suri tsuke zogan. Some of the missing zogan may have fallen away over the years.

Subject

Tree rings

Material

Iron with brass inlay

Size

82 x 82 x 5.5mm

Price

£160



T114 - Waves



School:
Shoami

Signature
None

Period
1775

Style
Hot stamped

Subject
Waves

Material
Iron with copper 'nail head' inlay

Size
73 x 73 x 3.7mm

Price
£85



T84 - Amida Rays

**School:**

Shoami in the Style of Saotome
Image shown in Jim Gilberts
'Japanese tsuba plates'

Signature

None

Period

1775

Style

Radiating lines
(Amida Yasuri) like flower petals

Subject

Amida Buddha's sun rays

Material

Iron with some copper inlay

Size

66 x 62 x 5mm

Price

£65



T61 - Jittoku and Kanzan



School:

Soten

Signature

None

Period

1825

Subject

Two Buddhist monks Jittoku and Kanzan were considered to be insane. They talked to each other in their own language, unknown to anyone else. Jittoku is shown with a besom and Kanzan with a scroll. Together with Zenshin and his tiger they are considered to be the four 'sleepers'.

Material

Iron and gold inlay. Rolled rim that may be shakudo

Size

67 x 64 x 5.5mm

Price

£235

The similar tsuba below is in the Milan National Museum of Science and Technology



T47 - Tembo hot stamp



School:
Tembo

Signature
None

Period
1800

Style
Hammered

Material
Iron

Size
85 x 85 x 4mm

Price
£120



T83 - Tembo



School:

Tembo

Signature

Very faint

Family name 3rd/4th kanji = Yasuba

Period

1650

Style

Tembo

Subject

Hot stamped kanji for kazi (wind)

Material

Iron

Size

83 x 81 x 5mm (mimi 6mm)

Price

£140



T168 – Tembo



School:

Tembo

Signature

None

Period

1825

Style

Tembo

Subject

Hot stamped with kanji for dai

Material

Iron with a silky texture

Size

85 x 82 x 5.0mm

Price

£225



T100 - Butterflies



School:

Tembo

Signature

None

Period

1750

Style

Tembo with overlay

Subject

Butterflies and hot stamps

Material

Iron with gold overlay

Size

80 x 80 x 4.5mm

Price

£160

Note

The butterfly shapes are a later addition



T54 - Dragon



School:
Tetsugendo

Signature
None

Period
1850

Style
Carved

Subject
Dragon

Material
Iron

Size
66 x 61 x 4.5mm

Price
£65



T32 - Pine needles



School:

Tosho

Signature

None

Period

1700

Style

Stamped – (ishime ji)

Subject

Clumps of pine needles

Material

Iron

Size

69 x 69 x 4mm

Price

£75



T30 - Dragon



School:
Umetada

Signature
On the front (omote)
Yamashiro Kuni
Nishijin ju
On the back (ura)
Umetada

Period
1700

Style
Sukashi

Subject
Dragon

Material
Iron

Size
75 x 75 x 5

Price
£190



Peach



School:
Umetada

Signature
Umetada 埋忠

Period
1750

Style
Raised design

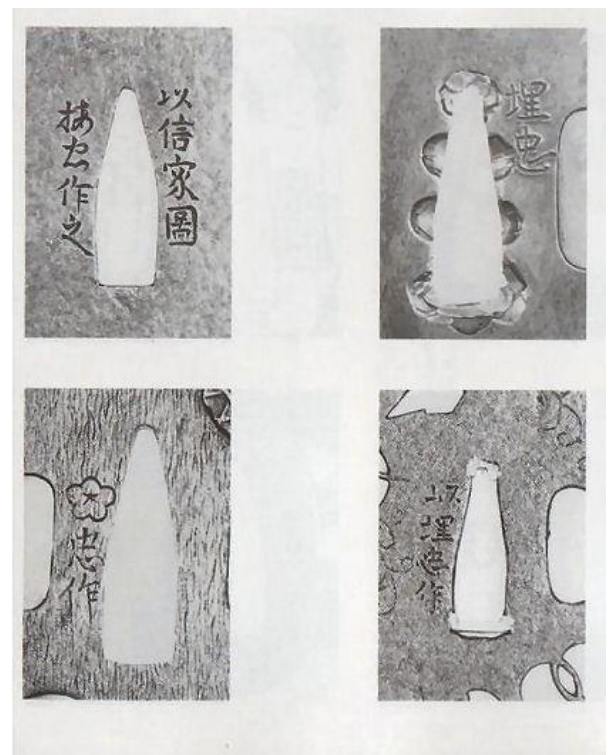
Subject
Peach leaves

Shape
Oval (naga-maru-gata)

Material
Iron

Size
68 x 64 x 3.23mm

Price
£105



reference data: Umetada school.
Momoyama - late edo period.

T202 - Hieroglyph



School:
Umetada

Signature
None

Period
1600

Style
Inlaid Hieroglyphics
with twisted rope rim

Subject
Hieroglyph symbols. Possibly seal
script

Material
Iron, copper and gold

Size
89 x 87 x 4.2 - 5.3mm

Price
£190



T198 - Ebi



School:
Umetada

Signature
None

Period
1675

Subject
Lobster (ebi), peach and leaves in shakudo

Material
Iron

Size
74 x 74 x 4.4 rim
(3.7mm centre)

Price
£160

Note
Symbols of long life and prosperity



T98 - Two circles (Wa)



School:
Umetada

Signature
None

Period
1600

Style
Sukashi

Subject
Two circles (wa)

Material
Iron

Size
70 x 70 x 5mm

Price
£140



T73 - Dragon Inlay

School:

Unknown

Signature

None

Period

1825

Style

Inlay

Subject

Dragon (moguri ryu)

Material

Iron and Brass inlay

Size

78 x 75 x 4.5mm

Price

£180

Please note that the 'tail' is very loose



T135 - Pine Needles



School:
Unknown

Signature
None

Period
1850

Style
Stamped

Subject
Pine needles

Material
Iron

Size
73 x 67 x 4.3mm

Price
£95



T161 - Clouds



School:
Unknown

Signature
None

Period
1800

Style
High relief

Subject
Dragon in lightening clouds

Material
Iron. Iron inlaid on iron. An unusual configuration by a gifted maker

Size
85 x 79 x 4.8mm

Price
£150



T169 - Crossed paths



School:
Unknown

Signature
None

Period
1825

Style
Carved

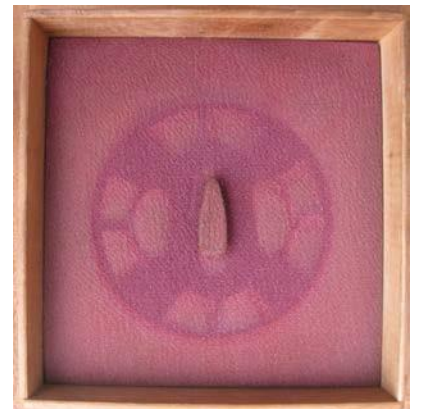
Subject
Two crossed paths

Material
Iron

Size
69 x 69 x 5.4mm

Price
£110

Note
One from
an old
collector



T178 - Boars Eye



School:
Unknown

Signature
None

Period
1800

Style
Well formed nanako (fish egg) ground

Subject
Nanako ground with four wild boars eye (inome) sukashi

Material
Brass (sentoku)

Size
75 x 74 x mimi = 5.9 & 3.9mm

Price
£215



T186 - Fuji



School:
Unknown

Signature
None

Period
1500

Style
Punched

Subject
Mount Fuji and it's reflection

Material
Copper and shakudo with very nicely formed rolled lips maybe to signify snow or foliage

Size
73 x 72 x 3.7mm

Price
£200



T10 - Daikon leaves



School:

Unknown

Signature

None

Period

1650

Style

Crisply carved

Subject

Leaves of the giant radish (Daikon)

Material

Iron and gold dots

Size

72 x 69 x 4mm

Price

£90



T36 - Pine Tree

School:

Not known

Signature

None

Period

1825

Style

Unknown

Subject

Pine tree and leaves

Material

Iron with copper and bras inlay

Size

60 x 50 x 5mm

Price

£75



T50 - Oval Rings



School:
Unknown

Signature
None
Box is signed
Mokko (four lobed)
Sukashi (cut out)
Tsuba

Period
1750

Style
Sukashi

Subject
Oval rings

Material
Iron with almost invisible radial file marks

Size
71 x 71 x 5mm

Price
£150



Mokko
Two kanji

Sukashi